

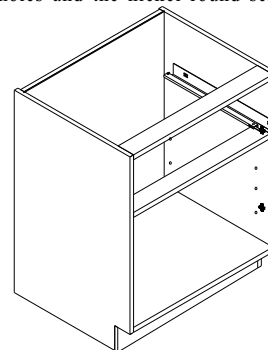
Revolution Series Products Installation Instructions

----- Base Cabinet (B)

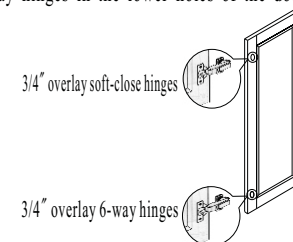
I. Hardware List:



Step 3: Attach the Undermount soft-close slides onto the side panels using the pre-drilled holes and the nickel round screws.

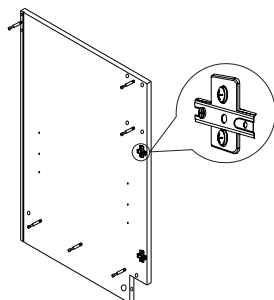


Step 6: Install the 3/4" overlay soft-close hinges in the upper holes of the doors; Install the 3/4" overlay 6-way hinges in the lower holes of the doors.

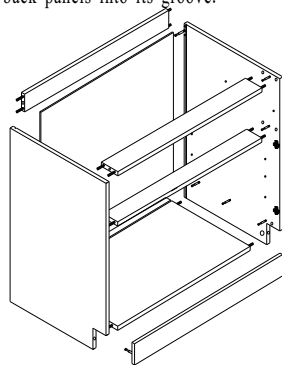


II. Installation Steps:

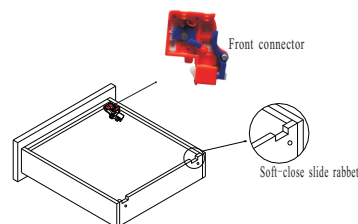
Step 1: Install the soft-close hinge plate on upper holes of the side panels; install the 6-way hinge plate on lower holes of the side panel.



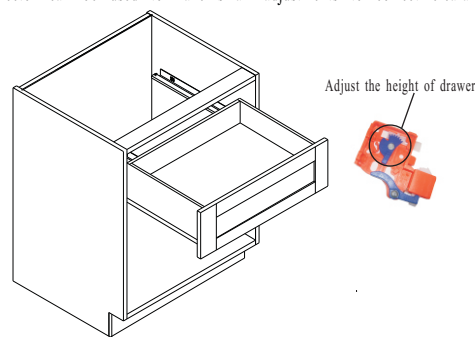
Step 2: Assemble the cabinet using cam locks and wood dowels. Start by screwing in all the male ends of the cam locks and inserting the wooden dowels. When the sides, bottom base and braces are loosely connected, tighten everything with the female part of the cam locks. Finish by sliding the back panels into its groove.



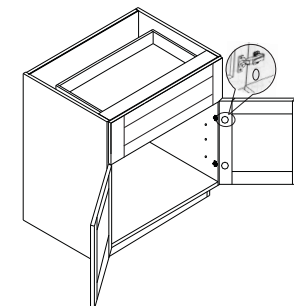
Step 4: Assemble the drawers and install the drawer front connector on the underside of the bottom panels of the drawers, secure with short screws.



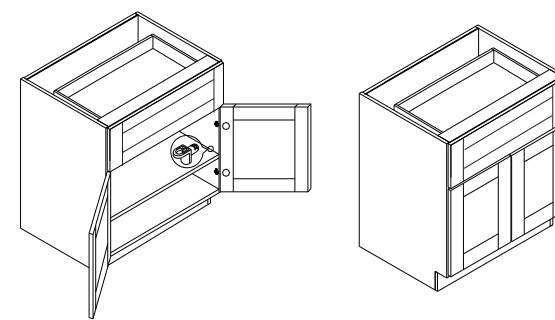
Step 5: Install the drawers. First, extend the arms of the drawer slides and place drawer on top of the extended arms. There is a notch cut into the bottom of each side of the drawer where the arms rest. Reach under and pull the arms to meet the drawer front connector. The arms should slide forward until a "click" is felt. This is a secure connection. After that, a small lever on the drawer front connector can be used to make small adjustments to correct clearance.



Step 7: Connect the doors to the box, hinges on the door panels snap into the hinges on the side panels.



Step 8: Install the shelf supports at the desired height then place shelves on top of the supports. Adjust the hinges to ensure that the clearance for all doors is the same. Finally, check the firmness and stability of the cabinet tightening the cam locks as necessary.



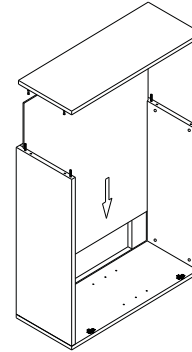
Revolution Series Products Installation Instructions

----- Wall Cabinet (W)

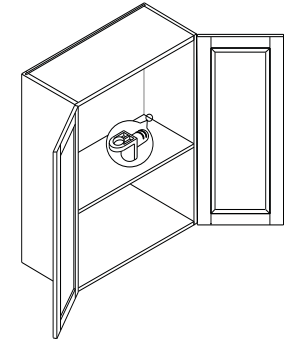
I. Hardware List:



Step 3: slide the back panel into its slot, then install the side panel using cam locks and wood dowels.

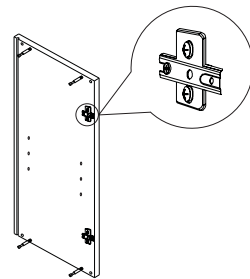


Step 6: Install the shelf supports at the desired height then place shelves on top of the supports.



II. Installation Steps:

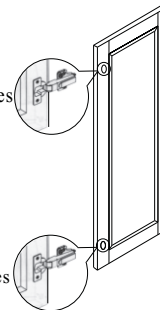
Step 1: Install the soft-close hinge plate on upper holes of the side panels; install the 6-way hinge plate on lower holes of the side panel.



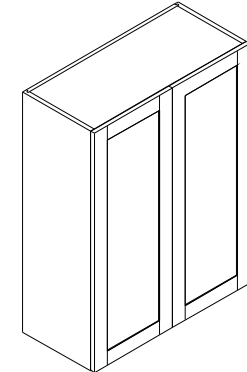
Step 4: Install the 3/4" overlay soft-close hinges in the upper holes of the doors; install the 3/4" overlay 6-way hinges in the lower holes of the doors.

3/4" overlay soft-close hinges

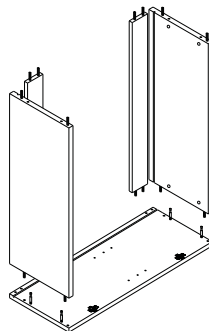
3/4" overlay 6-way hinges



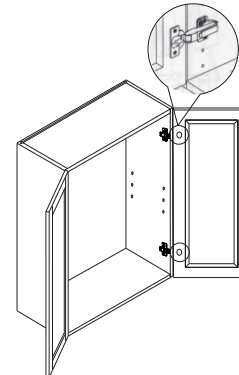
Step 7: Adjust the hinges to ensure that the clearance for all doors is the same. Finally, check the firmness and stability of the cabinet tightening the cam locks as necessary.



Step 2: connect the top panel, bottom panel, back braces and side panel using cam locks and wood dowels.



Step 5: connect the doors to the box, hinge on the door panels snap into the hinges on the side panels.



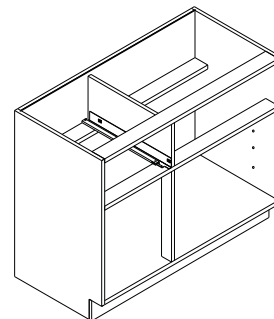
Revolution Series Products Installation Instructions

----- Base Blind Corner (BBC)

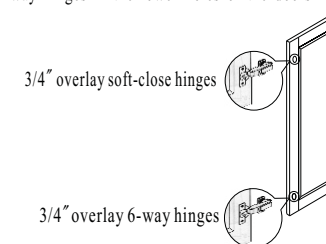
I. Hardware List:



Step 3: Attach the Undermount soft-close slides onto the side panels using the pre-drilled holes and the nickel round head screws.

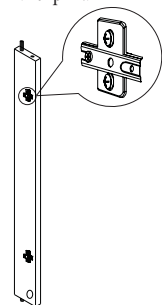


Step 6: Install the 3/4" overlay soft-close hinges in the upper holes of the doors; Install the 3/4" overlay 6-way hinges in the lower holes of the doors.

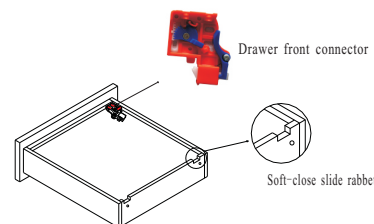


II. Installation Steps:

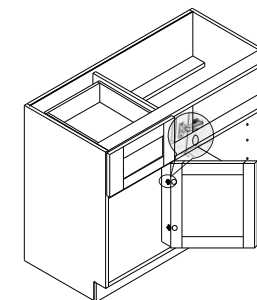
Step 1: Install the soft-close hinge plate on upper holes of the pillar; install the 6-way hinge plate on lower holes of the pillar.



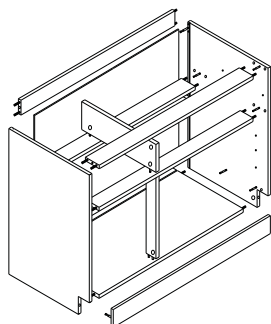
Step 4: Assemble the drawers and install the drawer front connector on the underside of the bottom panels of the drawers, secure with short screws.



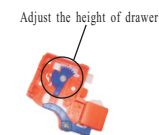
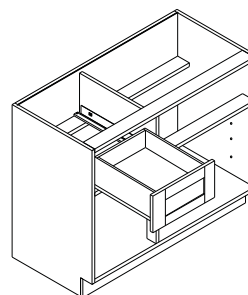
Step 7: Connect the doors to the box, hinges on the door panels snap into the hinges on the pillar.



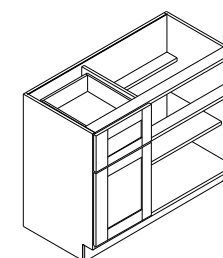
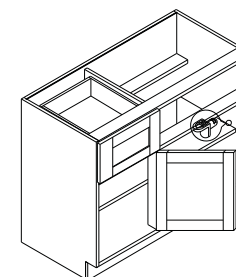
Step 2: Assemble the cabinet using cam locks and wood dowels. Start by screwing in all the male ends of the cam locks and inserting the wooden dowels. When the sides, bottom base and braces are loosely connected, tighten everything with the female part of the cam locks. Finish by sliding the back panel into its groove.



Step 5: Install the drawers. First, extend the arms of the drawer slides and place drawer on top of the extended arms. There is a notch cut into the bottom of each side of the drawer where the arms rest. Reach under and pull the arms to meet the drawer front connector. The arms should slide forward until a "click" is felt. This is a secur connector. After that, a small lever on the drawer front connector can be used to make small adjustment to correct clearance.



Step 8: Install the shelf supports at the desired height then place shelves on top of the supports. Adjust the hinges to ensure that the clearance for all doors is the same. Finally, check the firmness and stability of the cabinet tightening the cam locks as necessary.



Revolution Series Products Installation Instructions

----- Sink Base (SB)

I. Hardware List:



Cam locks



Wood dowels



3/4" overlay soft-close hinges



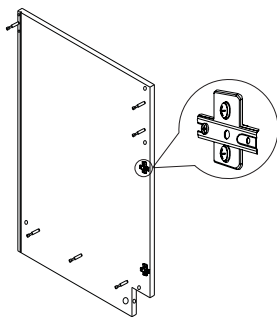
3/4" overlay 6-way hinges



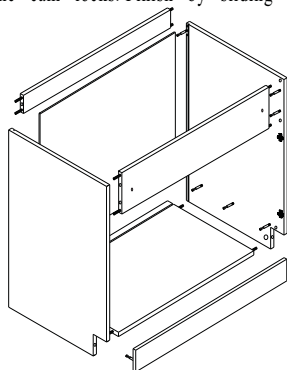
Black screws 3.5 * 1.2 "

II. Installation Steps:

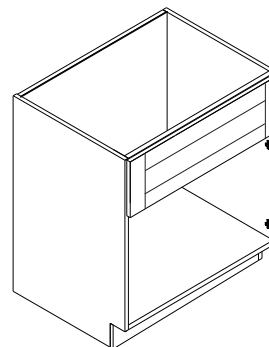
Step 1: Install the soft-close hinge plate on upper holes of the side panels; install the 6-way hinge plate on lower holes of the side panel.



Step 2: Assemble the cabinet using cam locks and wood dowels. Start by screwing in all male ends of the cam locks and inserting the wooden dowels. When the sides, bottom base and braces are loosely connected, tighten everything with the female part of the cam locks. Finish by sliding the back panel into its groove.

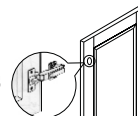


Step 3: Install the front panel to the front brace and attach using screws.

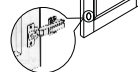


Step 4: Install the 3/4" overlay soft-close hinges in the upper holes of the doors; Install the 3/4" overlay 6-way hinges in the lower holes of the doors.

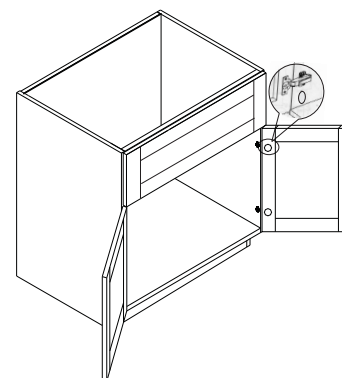
3/4" overlay soft-close hinges



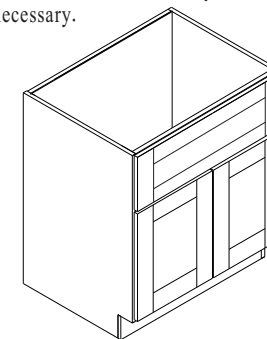
3/4" overlay 6-way hinges



Step 5: Connect the doors to the box, hinges on the door panels snap into the hinges on the side panels.



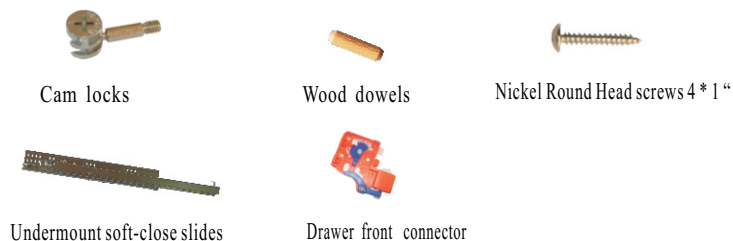
Step 6: Adjust the hinges to ensure that the clearance for all doors is the same. Finally, check the firmness and stability of the cabinet tightening the cam locks as necessary.



Revolution Series Products Installation Instructions

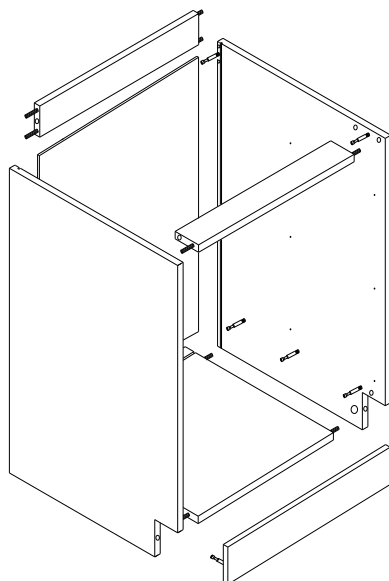
----- Base Drawer (DB)

I. Hardware List:

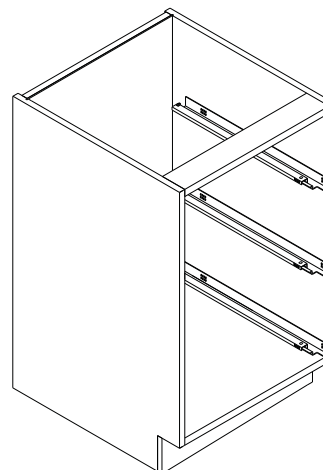


II. Installation Steps:

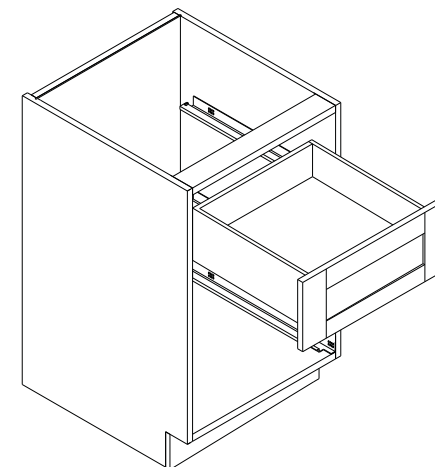
Step 1: Assemble the cabinet using cam locks and wood dowels. Start by screwing in all male ends of the cam locks and inserting the wooden dowels. When the sides, bottom base and front and back braces are loosely connected, tighten everything with the female part of the cam locks. Finish by sliding the back panel into its groove.



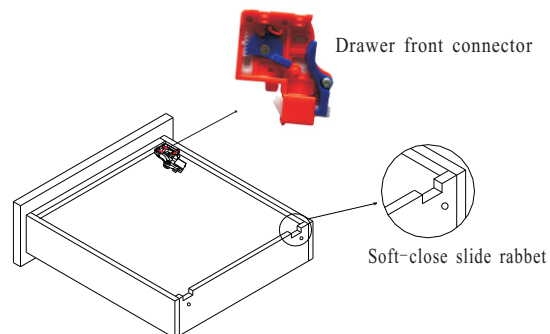
Step 2: Attach the Undermount soft-close slides onto the side panels using the pre-drilled holes and the nickel round head screws.



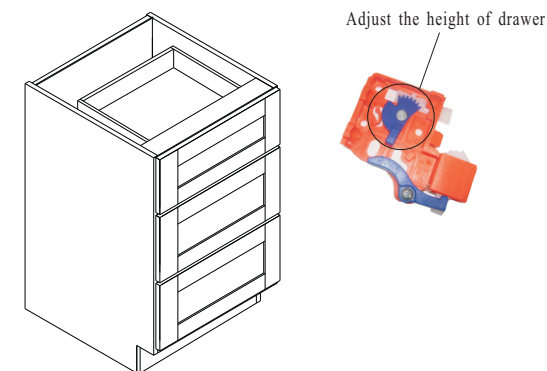
Step 4: Install the drawers. First, extend the arms of the drawer slides and place drawer on top of the extended arms. There is notch cut into the bottom of each side of the drawer where the arms rest. Reach under and pull the arms to meet the drawer front connector. The arms should slide forward until a "click" is felt. This is a secure connection.



Step 3: Assemble the drawers and install the drawer front connector on the underside of the bottom panels of the drawers, secure with short screws.



Step 5: After that, a small lever on the drawer front connector can be used to make small adjustments to correct clearance. Check the stability of the cabinet and make adjustments by tightening the cam locks.



Revolution Series Products Installation Instructions

----- Pantry Cabinet (WP)

I. Hardware List:



Cam locks



Wood dowels



3/4" overlay soft-close hinges



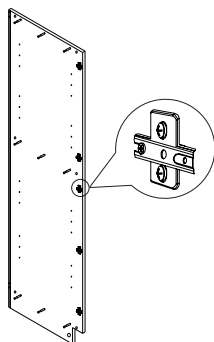
3/4" overlay 6-way hinges



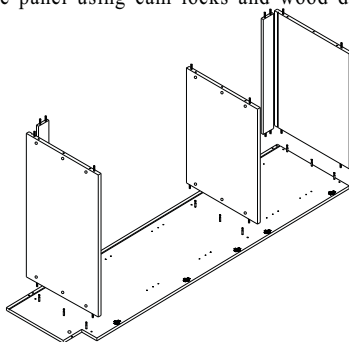
shelf supports

II. Installation Steps:

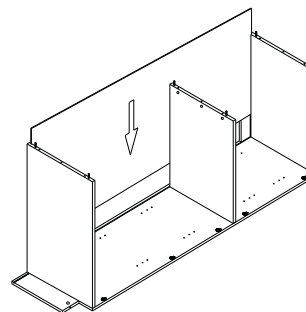
Step 1: Install the soft-close hinge plate on upper holes of the side panels; install the 6-way hinge plate on lower holes of the side panel.



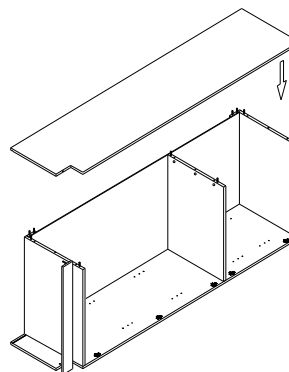
Step 2: Connect the top panel, bottom panel, middle panel and back braces to one side panel using cam locks and wood dowels.



Step 3: Slide the back panel into its slot in the top and bottom panels.



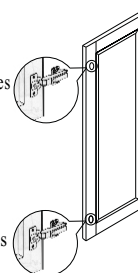
Step 4: Install the other side panel and toe kick using cam locks and wood dowels.



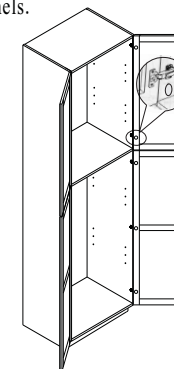
Step 5: Install the 3/4" overlay soft-close hinges in the upper holes of the doors; Install the 3/4" overlay 6-way hinges in the lower holes of the doors.

3/4" overlay soft-close hinges

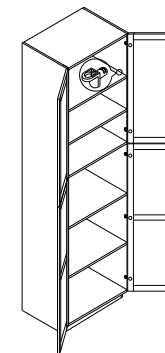
3/4" overlay 6-way hinges



Step 6: Connect the doors to the box, hinges on the door panels snap into the hinges on the side panels.



Step 7: Install the shelf supports at the desired height then place shelves on top of the supports.



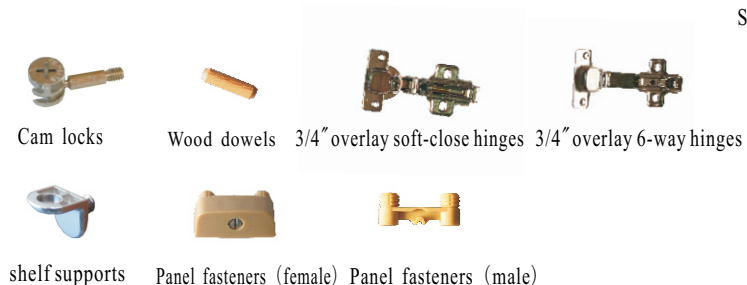
Step 8: Adjust the hinges to ensure that the clearance for all doors is the same. Finally, check the firmness and stability of the cabinet tightening the cam locks as necessary.



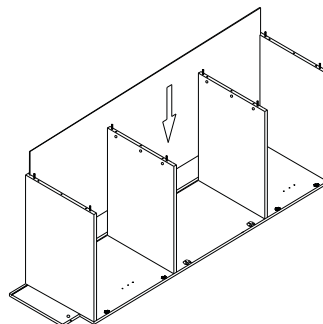
Revolution Series Products Installation Instructions

----- Oven Cabinet-Single (OVS)

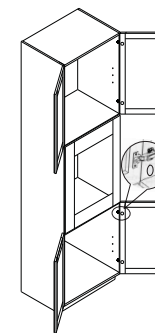
I. Hardware List:



Step 3: Slide the back panel into its slot in the top and bottom panels.

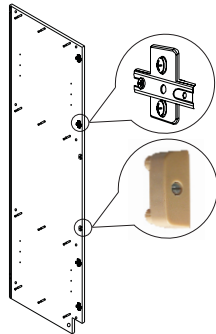


Step 6: Connect the doors to the box, hinges on the door panels snap into the hinges on the side panels. Insert the male fasteners into the female fasteners to attach the center frame.

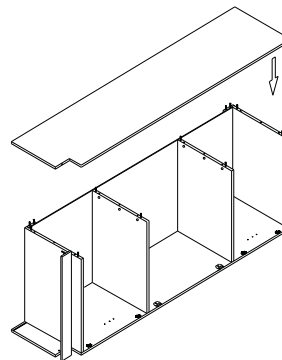


II. Installation Steps:

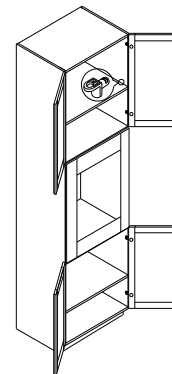
Step 1: Install the soft-close hinge plate on upper holes of the side panels. install the 6-way hinge plate on lower holes of the side panel. In the middle, install the female fasteners.



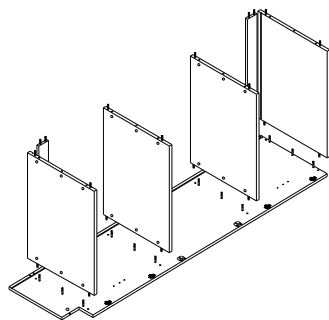
Step 4: Install the other side panel and toe kick using cam locks and wood dowels.



Step 7: Install the shelf supports at the desired height then place shelves on top of the supports.

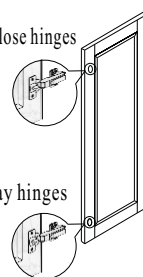


Step 2: Connect the top panel, bottom panel, middle panels and back braces to one side panel using cam locks and wood dowels.

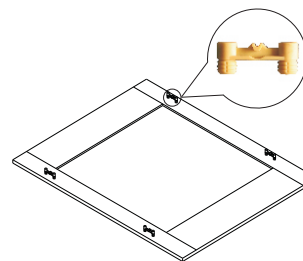


Step 5: Install the 3/4" overlay soft-close hinges in the upper holes of the doors; install the 3/4" overlay 6-way hinges in the lower holes of the doors. Install the male fasteners on the center frame.

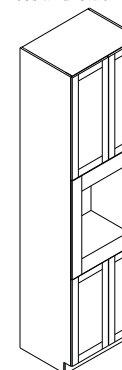
3/4" overlay soft-close hinges



3/4" overlay 6-way hinges



Step 8: Adjust the hinges to ensure that the clearance for all doors is the same. Finally, check the firmness and stability of the cabinet tightening the cam locks as necessary.



Revolution Series Products Installation Instructions

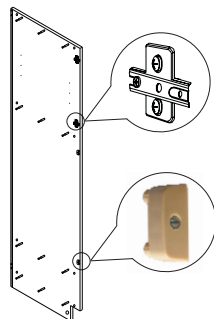
----- Oven Cabinet-Double (OVD)

I. Hardware List:

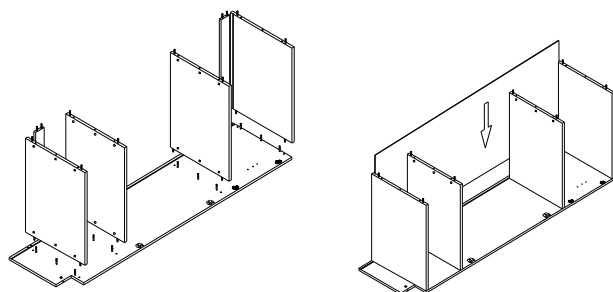


II. Installation Steps:

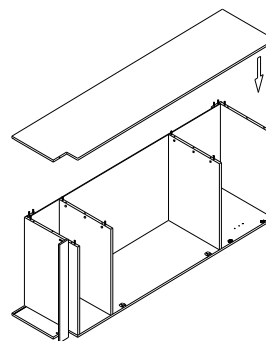
Step 1: Install the soft-close hinge plate on upper holes of the side panels; install the 6-way hinge plate on lower holes of the side panel. In the middle, install the female fasteners.



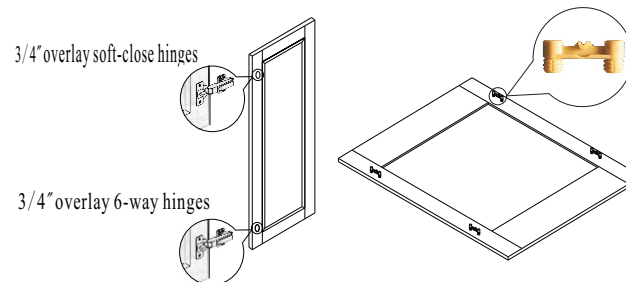
Step 2: Connect the top panel, bottom panel, middle panels and back braces to one side panel using cam locks and wood dowels. Slide the back panel into its slot in the top and bottom panels.



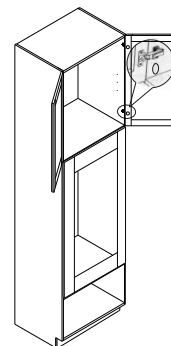
Step 3: Install the other side panel and toe kick using cam locks and wood dowels.



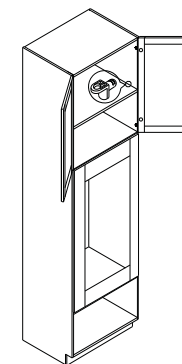
Step 4: Install the 3/4" overlay soft-close hinges in the upper holes of the doors; install the 3/4" overlay 6-way hinges in the lower holes of the doors. Install the male fasteners on the center frame.



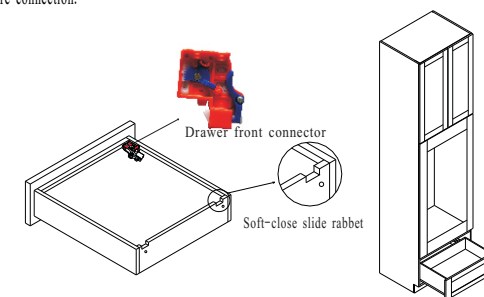
Step 5: Connect the doors to the box, hinges on the door panels snap into the hinges on the side panels. Insert the male fasteners into the female fasteners to attach the center frame.



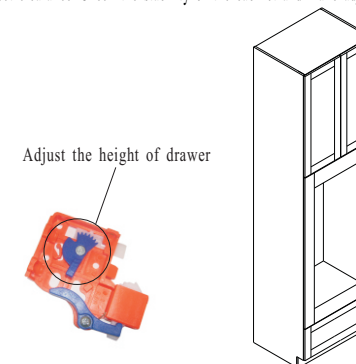
Step 6: Install the shelf supports at the desired height then place shelves on top of the supports.



Step 7: Install the drawers. First, extend the arms of the drawer slides and place drawer on top of the extended arms. There is a notch cut into the bottom of each side of the drawer where the arms rest. Reach under and pull the arms to meet the drawer front connector. The arms should slide forward until a "click" is felt. This is a secure connection.



Step 8: After that, a small lever on the drawer front connector can be used to make small adjustment to correct clearance. Check the stability of the cabinet and make adjustment by tightening the cam locks.



Revolution Series Products Installation Instructions

----- Base Corner Cabinet (DCB)

I. Hardware List:



Cam locks



Wood dowels



165° hinges



135° hinges



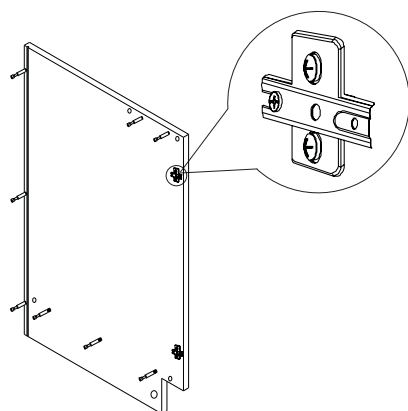
Soft-close bumpers



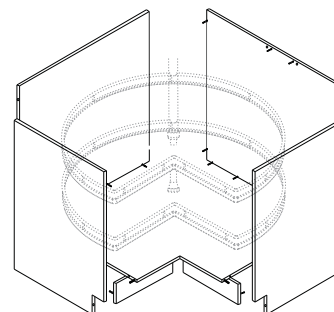
Nickel screws $\varnothing 4 \times 5/8"$

II. Installation Steps:

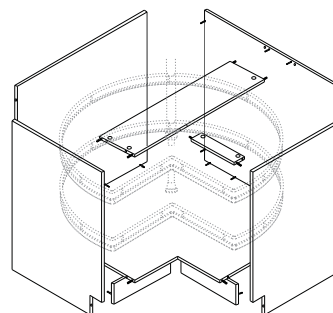
Step1: Assemble the cabinet body using cam locks and wood dowels. Start by screwing in all the male ends of the cam locks and inserting the wooden dowels.



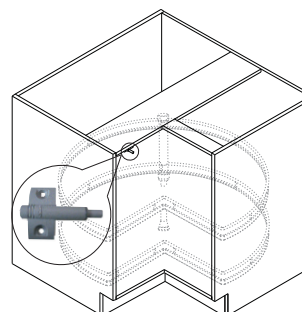
Step 2: When the 4 side panels, bottom and braces are loosely connected, put the lazy susan trays into the cabinet.



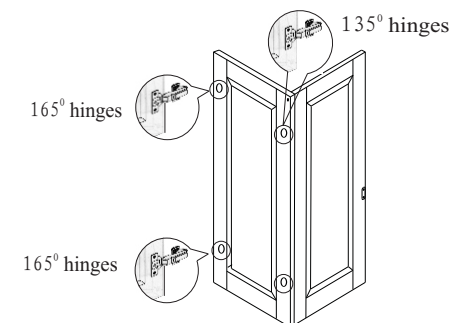
Step 3: Tightening everything with the female part of the cam locks. Finish by sliding the back panel into its groove.



Step 4: Install the door hinges. First, connect the two door panels together using the 135° hinges, then attach the 165° hinges to the door.



Step 5: Install the metal turntable. Screw the flanges into the top and bottom panels.



Step 6: Connect the doors to the cabinet. Match up the screw holes on the side panel to the holes in the hinge and tighten. Adjust the hinges to ensure that the clearance for all doors is the same. Finally, check the firmness and stability of the cabinet tightening cam lock where necessary.

